

MENORAH

HANUKKAH PLACE SETTING

shown on page 20

DESIGN SIZES: Menorah, 2¾" x 3½"

Star of David, 2¾" x 2¾"

Stitch count, Menorah, 39 w x 44 h

Star of David, 33 w x 33 h

MATERIALS

13" x 18" 14-count Charles Craft place mat, white

15" x 15" 14-count Charles Craft napkin, white

Embroidery floss, each color listed in color key

Kreinik blending filament, gold 002

Size 24 tapestry needle

STITCHING

Note: Work blended needles (joined by brackets in color key) in both designs with one strand of each color listed.

1. For place mat, center tallest candle flame of Menorah design 1" from top, excluding fringe in measurement. Work design in cross stitch using two strands floss.

Backstitch Menorah, Star of David on Menorah, bow, and candle flames in 838/5878/380; blue candles in 797/132/7143, and violet candles in 333/-/119.

2. For napkin, place ribbon ends of Star of David design 1" up and in from corner, excluding fringe. Work design in cross stitch with two strands floss. Work all backstitching with 838/5878/380.

3. For a more delicate look, designs may be worked on 32-count linen over two threads as shown.

HANUKKAH PLACE SETTING KEY

DMC Coats Anchor®

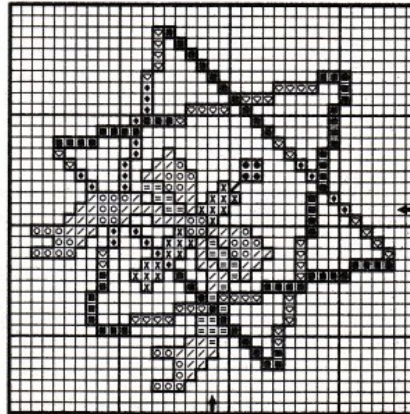
x 340	7110	118	med. blue-violet
• 743	2294	305	pale yellow
= 797	7143	132	royal blue
/ 798	7022	131	dk. delft
○ 799	7030	136	med. delft
+ 809	7021	130	delft

Blended Needles

— 3045	2412	888	dk. yellow-beige
◆ 002	Kreinik gold blending filament		
— 3046	2410	887	med. yellow-beige
◆ 002	Kreinik gold blending filament		
— 3047	2300	852	lt. yellow-beige
◆ 002	Kreinik gold blending filament		

Backstitching

333	119	dk. blue-violet	
838	5478	380	very dk. beige-brown



STAR OF DAVID

Remove the patterns carefully. Straighten the staple arms, gently pull out the pattern sheets, and bend the staple arms back in place. Copyright 1994 PJS Publications, Incorporated. All rights reserved. The Pattern Section comprises 16 pages of this issue.

McCall's
Needlework
Pattern Section
December 1994